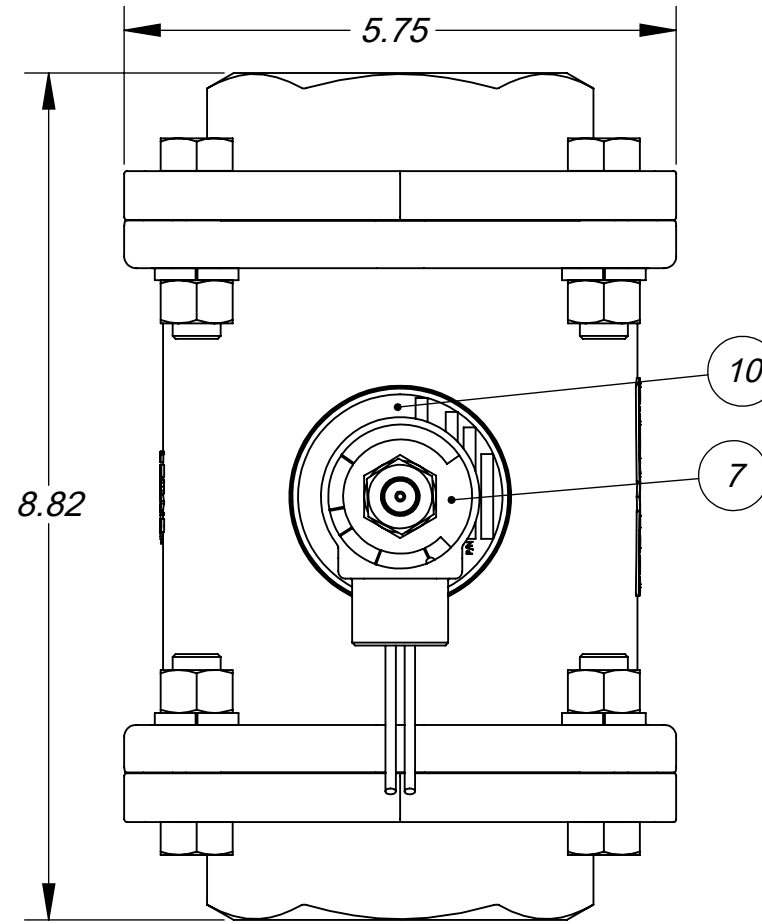


**C310432**

**310432-SM-CC-EC-VV**

**NOTES:**

1. PILOT PRESSURE TO MEDIA PRESSURE RATIO: 1:1.
2. OPERATING PRESSURE: 150 PSI MAX.
3. TEMPERATURE RANGE: -30° F TO 225° F.
4. PRIMARY OPERATOR: DIRECT SOLENOID OPERATOR.
5. SERVICE MEDIA: LIQUIDS AND INERT GASES.
6. SLEEVE MATERIAL: SEE TBL SLEEVE MAT OPTIONS (SM)  
(FOR ALL OTHERS CONSULT THE FACTORY)
7. SOLENOID VOLTAGE: AC OR DC.
8. FOR MAXIMUM SLEEVE LIFE, THE PILOT TO MEDIA PRESSURE DIFFERENTIAL, SHOULD NOT EXCEED 20 PSI. FOR MEDIA PRESSURE BELOW 50 PSI, THE PILOT PRESSURE IS MEDIA PRESSURE PLUS 15 PSI.



ITEM NO.	PART NUMBER	DESCRIPTION	QTY.
1	01-0184	WASHER LOCK 1/2 REGULAR BLOX	8
2	01-0229	NUT HEX REGULAR 1/2 - 13 ZINC	8
3	01-2007	SCR., HHC 1/2-13 X 1.75 ZN PL	8
4	01-2023-2	SCREW, RIVET, #2 X .188, SS	2
5	03-1179	BODY, P/P SOL. ADAPTOR	1
6	03-1180	EXHAUST ADAPTOR	1
7	03-4001	NAMEPLATE, SERIES 20 SOL. OPP.	1
8	04-01-010	O-RING, BUNA 70, #010	1
9	20-1726	BODY 2, 2 1/2 NPT	1
10	20-1890	NAME PLATE, 1 1/4 -2 1/2 NPT, T-O-M	1
11	SEE TBL (EC)	END CAP 2 1/2"	2
12	SEE TBL (SM)	SLEEVE	1
13	SEE TBL (VV)	SOLENOID ASSY	1
14	SEE TBL (CC)	CENTER CORE ASSY	1

**SLEEVE MATERIAL OPTIONS (SM)**

CODE	MATERIAL	PART NO.
-	BUNA - N	20-1395
26	VITON	20-1396
29	EPR	20-1397

**CENTER CORE OPTIONS (CC)**

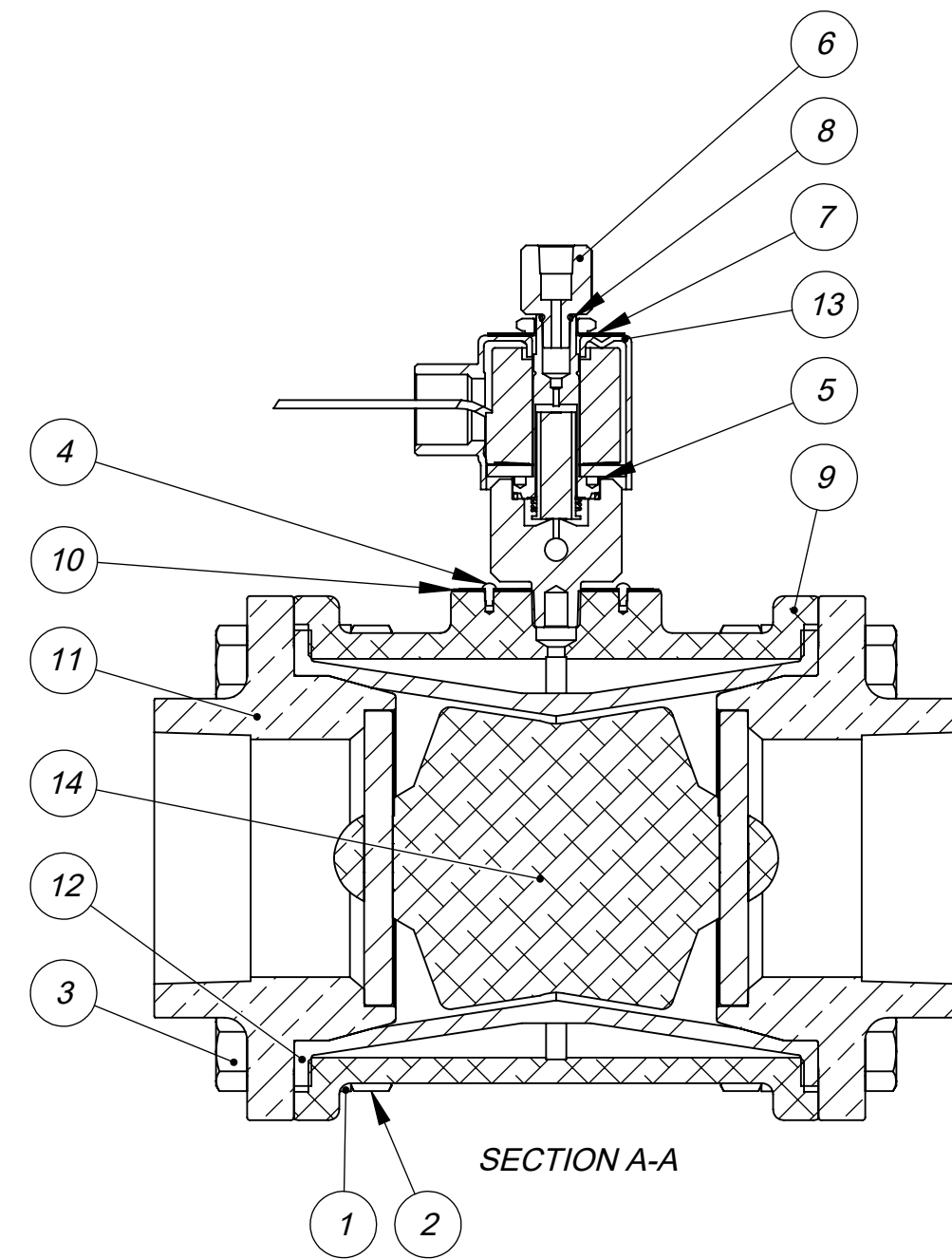
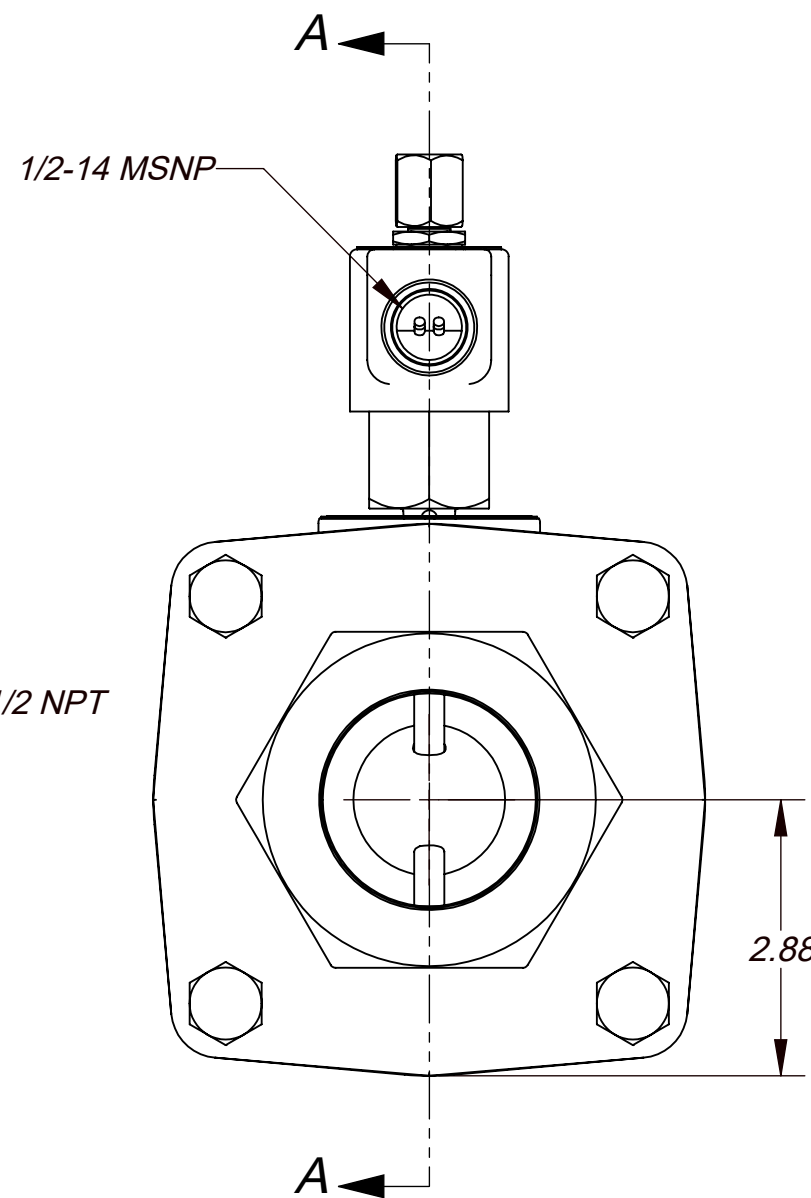
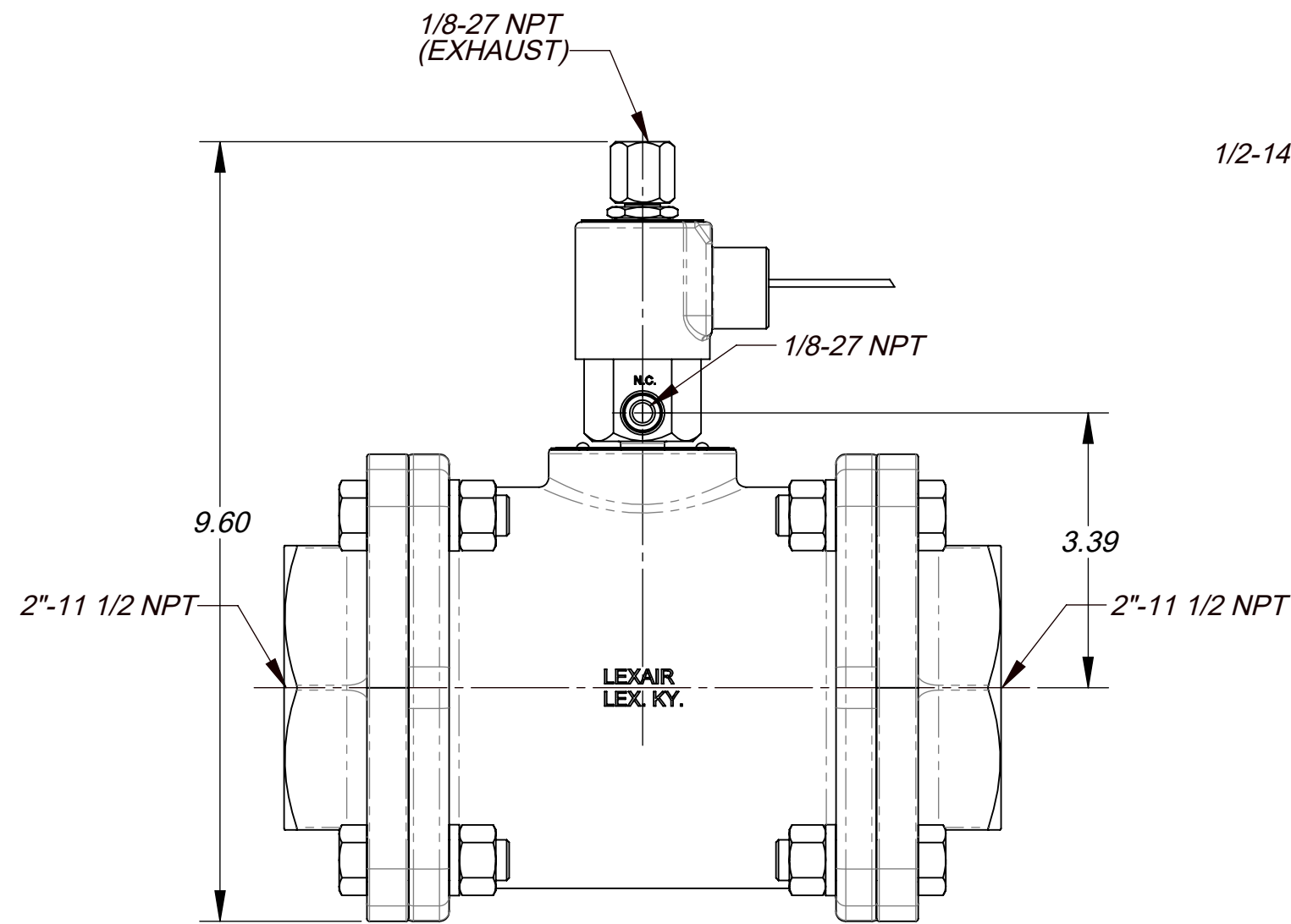
CODE	MATERIAL	PART NO.
-	NI PLTD AL	20-1070
C/F	PVC	-
C/F	316 STNLESS	-

**END CAP OPTIONS (EC)**

CODE	MATERIAL	PART NO.
-	NI PLT BRNZE	20-1405
C/F	316 STNLESS	-
C/F	PVC	-

**SOLENOID OPTIONS (VV)**

CODE	VOLTAGE	PART NO.
-1	120V/60Hz	03-3701
-2	240V/60Hz	03-3702
-3	480V/60Hz	03-3703
-4	6V DC	03-3704
-5	12V DC	03-3705
-6	24V DC	03-3706
-7	24V/60Hz	03-3707



THIS DOCUMENT AND ITS CONTENTS ARE THE PROPERTY OF LEXAIR, INC. THEY ARE FURNISHED TO YOU ON THE FOLLOWING CONDITIONS: NO RIGHT OR LICENSE IN RESPECT OF THIS DOCUMENT OR ITS CONTENTS IS GIVEN OR WANTED IN SUPPLYING THIS DOCUMENT TO YOU. THIS DOCUMENT OR ITS CONTENTS ARE NOT TO BE USED IN ANY MANNER INCONSISTENT WITH THE RIGHTS OF LEXAIR, INC. OR TO ITS DETRIMENT AND ARE NOT TO BE COPIED, REPRODUCED, OR DISCLOSED OF, EXCEPT WITH ITS PRIOR WRITTEN CONSENT.

**REVISIONS**

- PREVIOUS REVS. OMITTED.
- B** REDRAWN TO CURRENT ENG. STDS. ECL: 06113 10-16-06 HWP TPO
  - C** REDRAWN TO CURRENT ENG. STDS. ECL: 21032 06-21-21 TES

<p><b>Tolerances Unless Otherwise Specified:</b></p> <table border="1"> <thead> <tr> <th>TYPE</th> <th>FINISHED</th> <th>AS CAST</th> </tr> </thead> <tbody> <tr><td>DEC .00</td><td>± .015"</td><td>± .030"</td></tr> <tr><td>DEC .000</td><td>± .005"</td><td>± .010"</td></tr> <tr><td>FRACTIONAL</td><td>± 1/64"</td><td>± 1/32"</td></tr> <tr><td>ANGLES *</td><td>± 1/2°</td><td>± 1°</td></tr> </tbody> </table> <p>FINISH 175 µ in.</p>	TYPE	FINISHED	AS CAST	DEC .00	± .015"	± .030"	DEC .000	± .005"	± .010"	FRACTIONAL	± 1/64"	± 1/32"	ANGLES *	± 1/2°	± 1°	MATERIAL SPEC.	PC. NO.: 310432-X
	TYPE	FINISHED	AS CAST														
DEC .00	± .015"	± .030"															
DEC .000	± .005"	± .010"															
FRACTIONAL	± 1/64"	± 1/32"															
ANGLES *	± 1/2°	± 1°															
	PROCESS SPEC.	MADE FROM:															
		MODEL FILE: 310432.SLDASM															
		CAD FILE: 310432.slddrw															
<p><b>SO, T-O-M, 2" NPT</b></p> <p><b>Lexair, Inc.</b></p> <p>2025 Mercer RD, Lexington, Kentucky 40511</p>																	
<p>DRAWN: HWP CHECKED: TPO APRVD: TPO</p>	<p>SHEET NO. 1 of 1 SHEETS SCALE: 1: 1.5 APPROX. WT. 23.941 lbs.</p>	<p><b>C 310432</b></p>															

ECL: 06113