

310240-SM-CC-EC

ITEM NO.	PART NUMBER	DESCRIPTION	QTY.
1	01-0184	WASHER LOCK 1/2 REGULAR BLOX	8
2	01-0229	NUT HEX REGULAR 1/2 - 13 ZINC	8
3	01-2007	SCR., HHC 1/2-13 X 1.75 ZN PL	8
4	01-2023-2	SCREW, RIVET, #2 X .188, SS	2
5	20-1726	BODY 2, 2 1/2 NPT	1
6	20-1890	NAME PLATE, 1 1/4 -2 1/2 NPT, T-O-M	1
7	SEE TBL (CC)	CENTER CORE ASSY	1
8	SEE TBL (EC)	END CAP 2 1/2"	2
9	SEE TBL (SM)	SLEEVE	1

SLEEVE MATERIAL OPTIONS (SM)

CODE	MATERIAL	PART NO.
STD	BUNA - N	20-1395
26	VITON	20-1396
29	EPR	20-1397

CENTER CORE OPTIONS (CC)

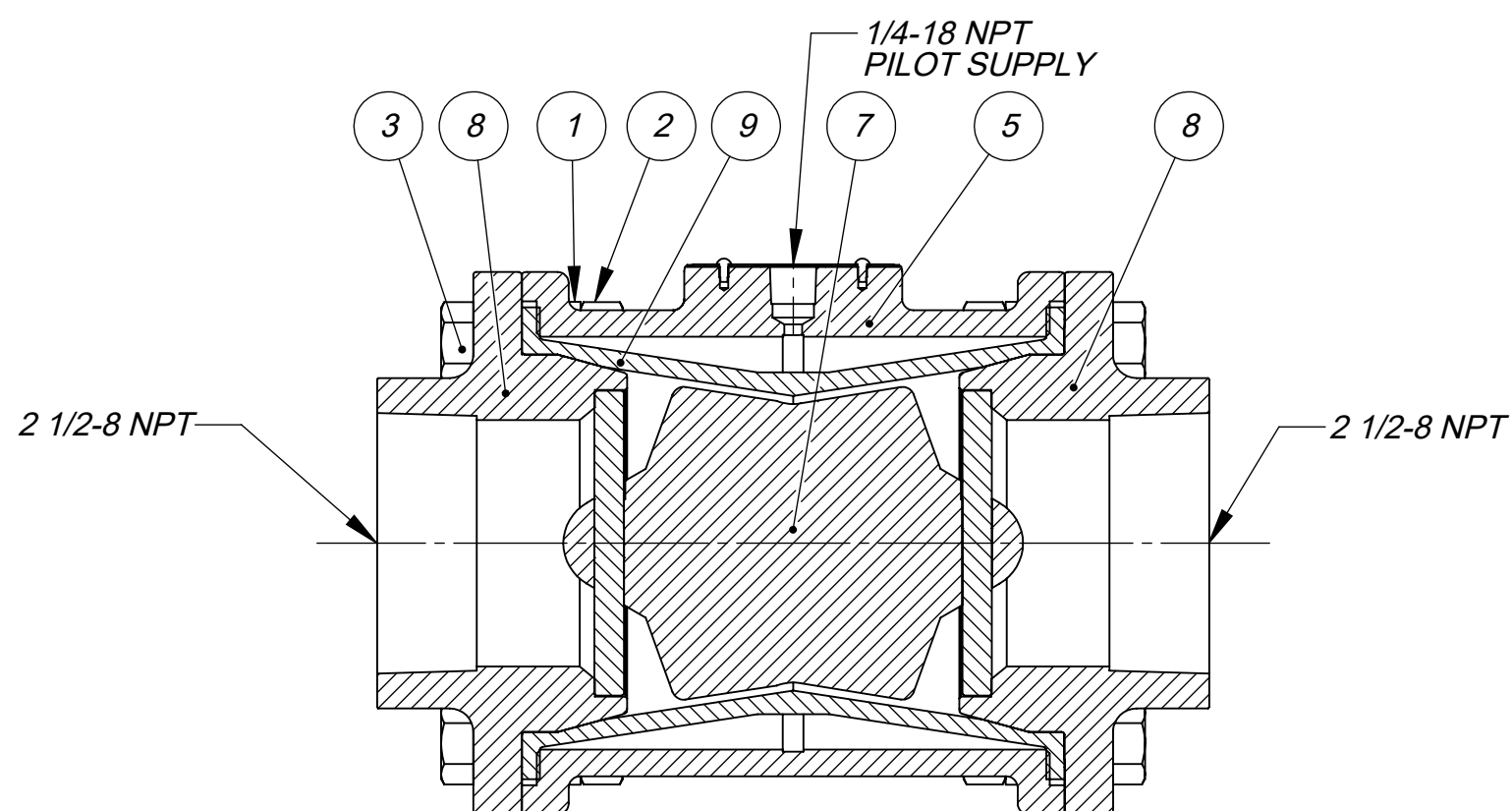
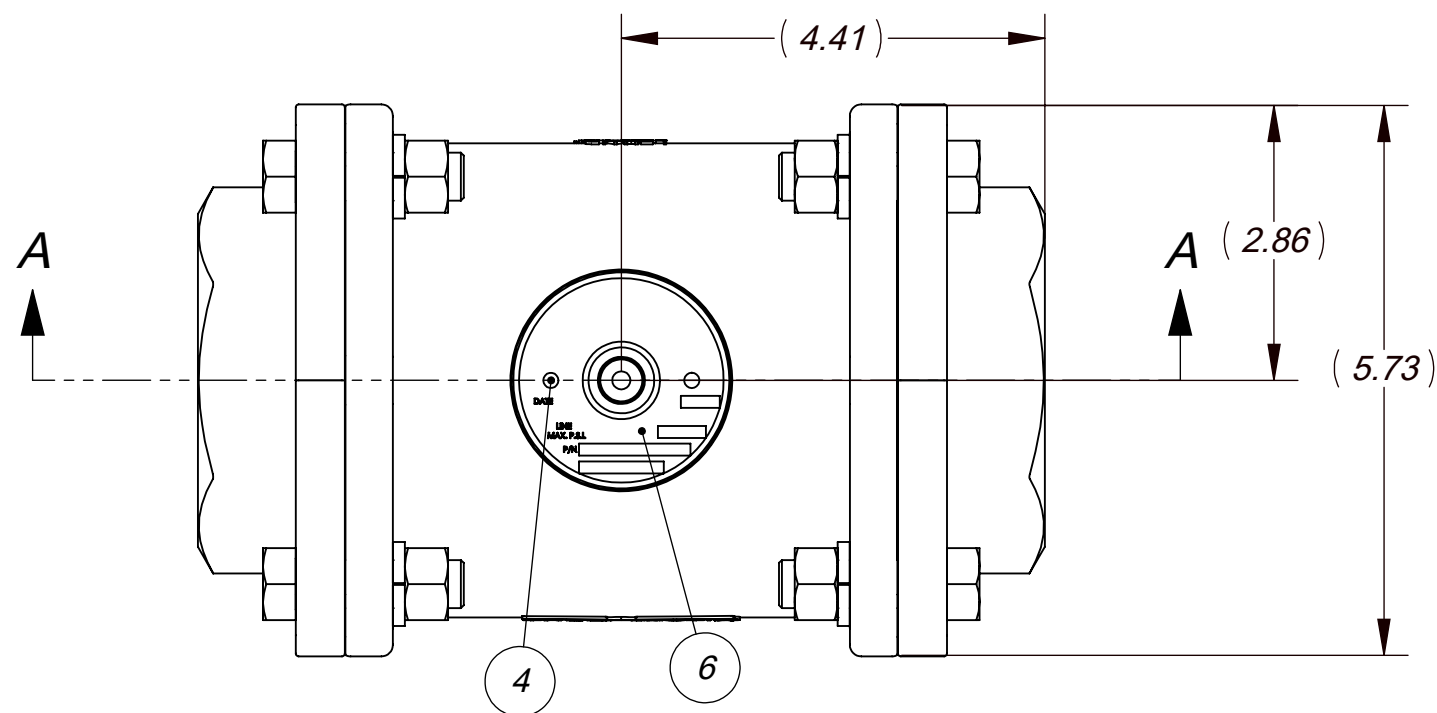
CODE	MATERIAL	PART NO.
STD	NI PLTD AL	20-1070

END CAP OPTIONS (EC)

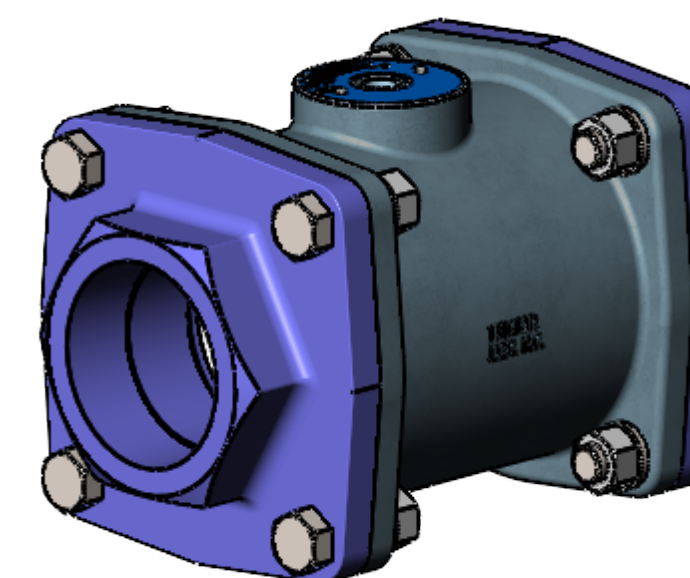
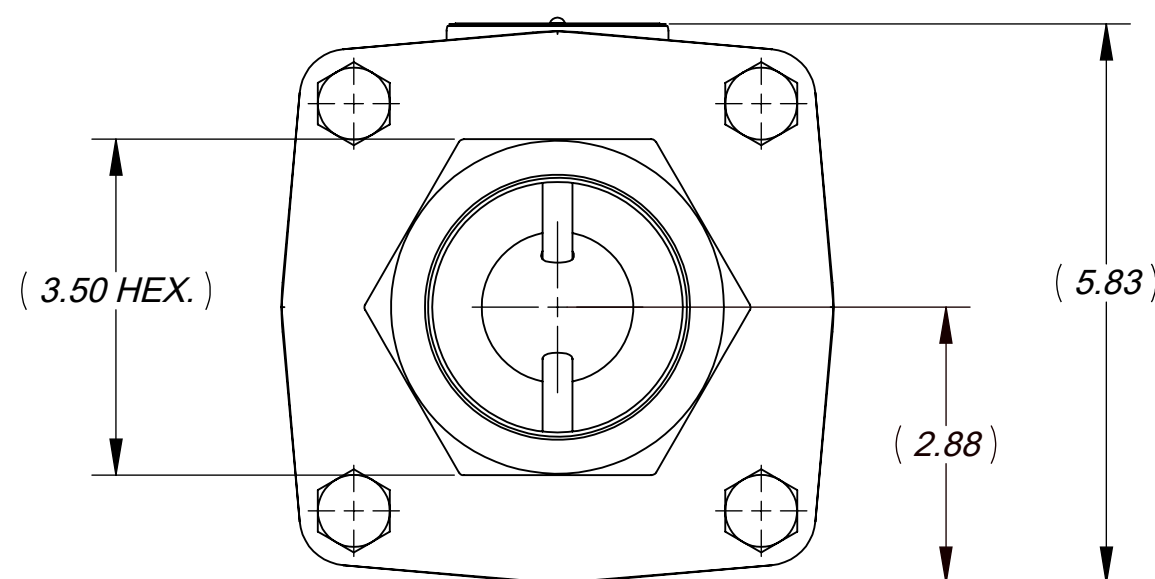
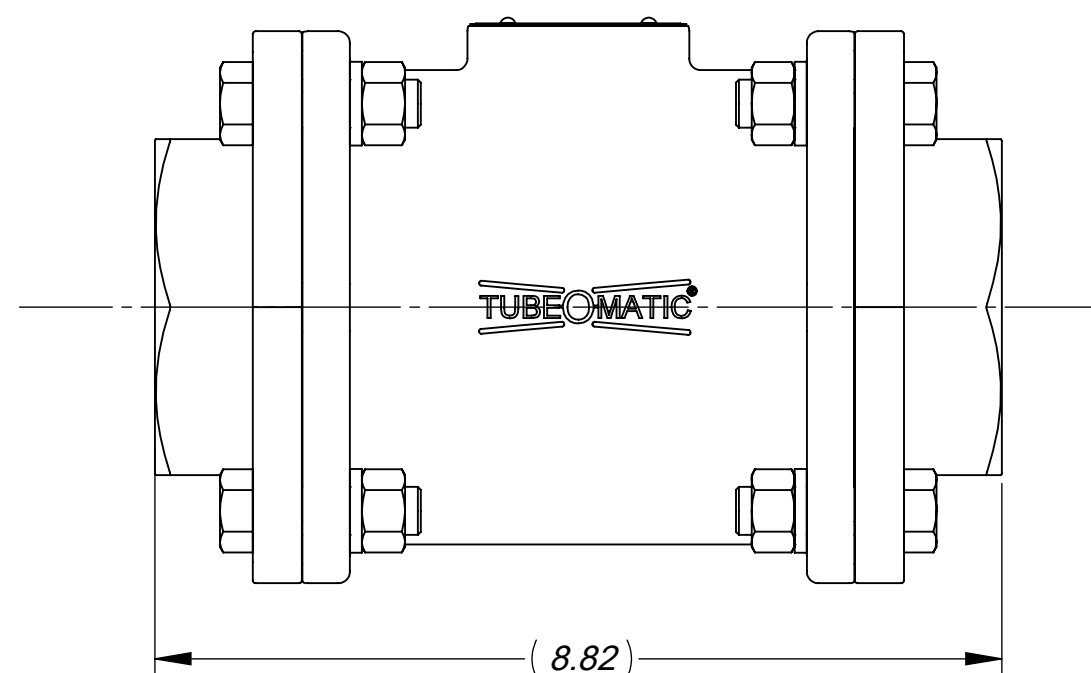
CODE	MATERIAL	PART NO.
STD	NI PLT BRNZE	20-1467

NOTES:

- PILOT PRESSURE TO MEDIA PRESSURE RATIO: 1:1.
- OPERATING PRESSURE: 150 PSI MAX.
- TEMPERATURE RANGE: -30° F TO 225° F.
- PRIMARY OPERATOR: DIRECT PILOT.
- SERVICE MEDIA: LIQUID AND INERT GASES.
- SEAL MATERIAL: SEE TABLE SLEEVE MAT. OPTIONS (SM) (FOR ALL OTHERS CONSULT THE FACTORY).
- FOR MAXIMUM SLEEVE LIFE, THE PILOT TO MEDIA PRESSURE DIFFERENTIAL SHOULD NOT EXCEED 20 PSI. FOR MEDIA PRESSURE BELOW 50 PSI, THE PILOT PRESSURE IS MEDIA PRESSURE PLUS 15 PSI.
- ASSEMBLY REF. DIMENSIONS: (DIM.) = PLUS OR MINUS .07.



SECTION A-A



ISOMETRIC VIEW

THIS DOCUMENT AND ITS CONTENTS ARE THE PROPERTY OF LEXAIR, INC. THEY ARE FURNISHED TO YOU ON THE FOLLOWING CONDITIONS:
 NO RIGHT OR LICENSE IN RESPECT OF THIS DOCUMENT OR ITS CONTENTS, GIVEN OR WANTED IN SUPPLYING THE DOCUMENT TO YOU.
 THIS DOCUMENT OR ITS CONTENTS ARE NOT TO BE USED OR TREATED IN ANY MANNER INCONSISTENT WITH THE RIGHTS OF LEXAIR, INC.
 OR TO ITS DETRIMENT AND ARE NOT TO BE COPIED, REPRODUCED, OR DISCLOSED OF, EXCEPT WITH ITS PRIOR WRITTEN CONSENT.

REVISIONS

REV.	DATE	DESCRIPTION
B	03-17-06	REDRAWN TO CURRENT ENG. STDS. ECL: 06028
C	06-21-21	REDRAWN TO CURRENT ENG. STDS. ECL: 21032

Tolerances Unless Otherwise Specified: TYPE FINISHED AS CAST DEC .00 ± .015" ± .030" DEC .000 ± .005" ± .010" FRACTIONAL ± 1/64" ± 1/32" ANGLES * ± 1/2° ± 1° FINISH 175 µ in.	MATERIAL SPEC.	PC. NO.: 310240
	SEE TABLE	MADE FROM:
PROCESS SPEC. SEE TABLE	MODEL FILE: 310240.SLDASM	
	CAD FILE: 310240.slddrw	
T-O-M ASSY, 2 1/2" STD.		
Lexair, Inc. 2025 Mercer RD, Lexington, Kentucky 40511	DRAWN	CHECKED
	HWP	TPO
APRVD.	SHEET NO. 1 of 1 SHEETS	
TPO	SCALE 1:2	
03-17-06	03-17-06	03-17-06
APPROX. WT. 22.794 lbs.		

ECL: 088