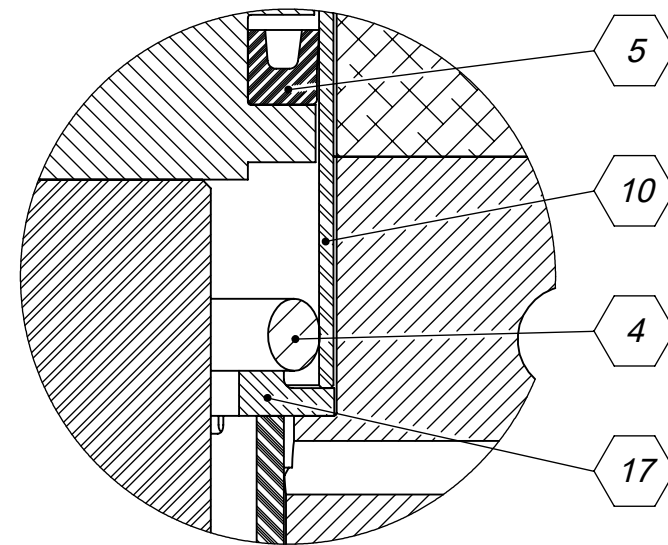
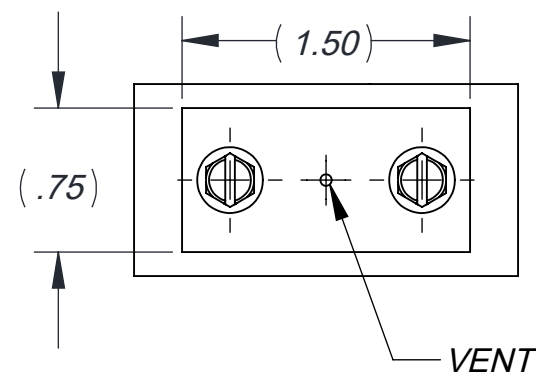
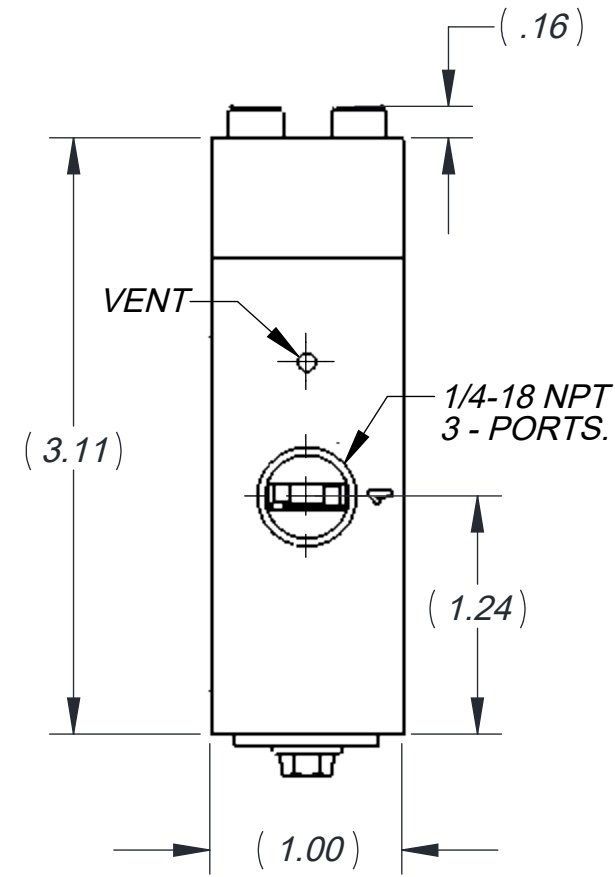
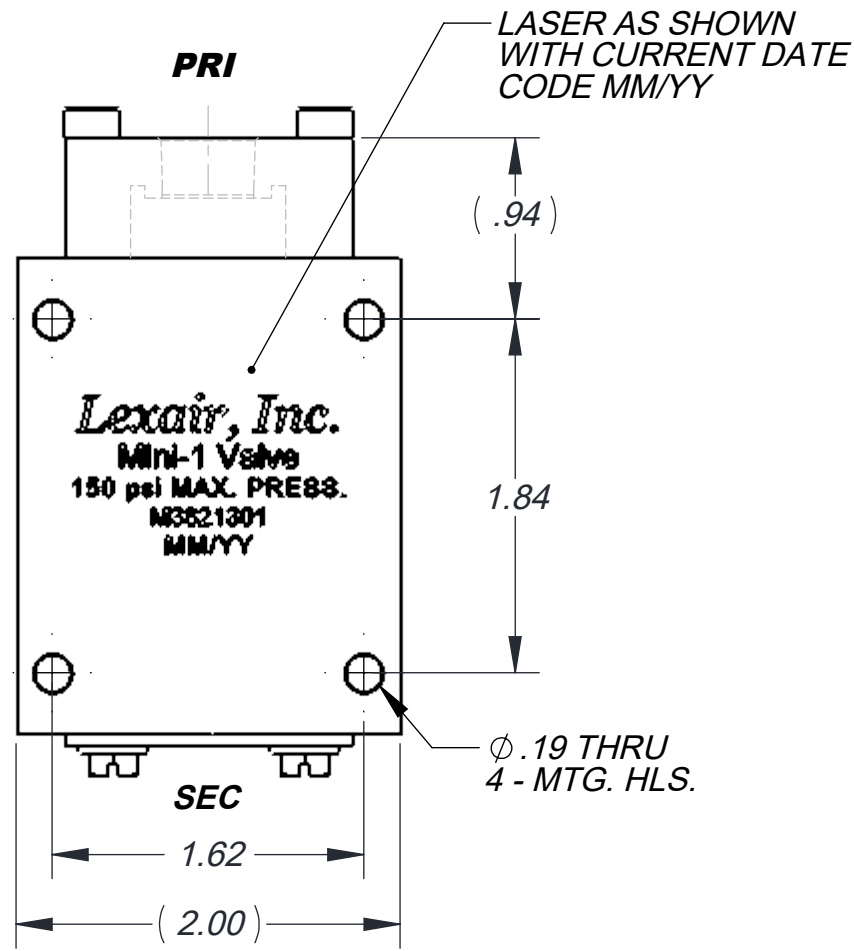
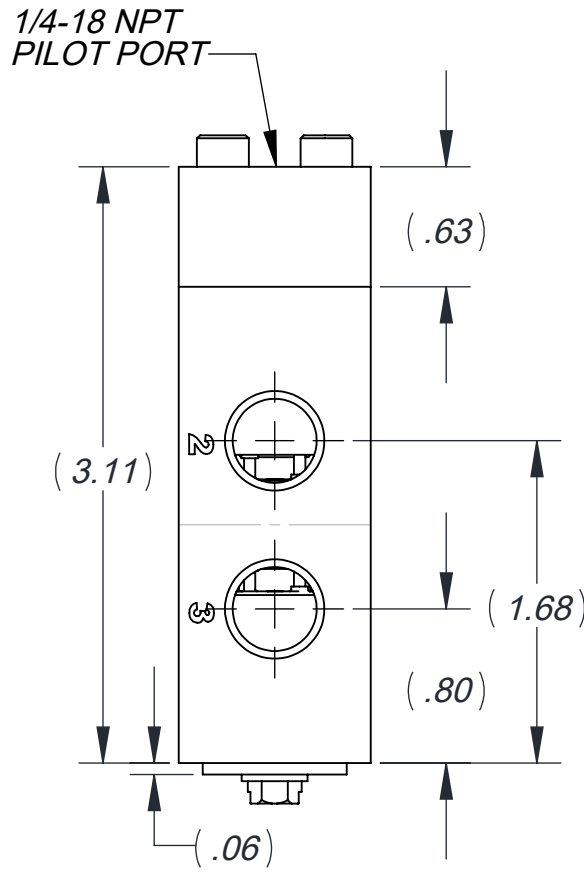
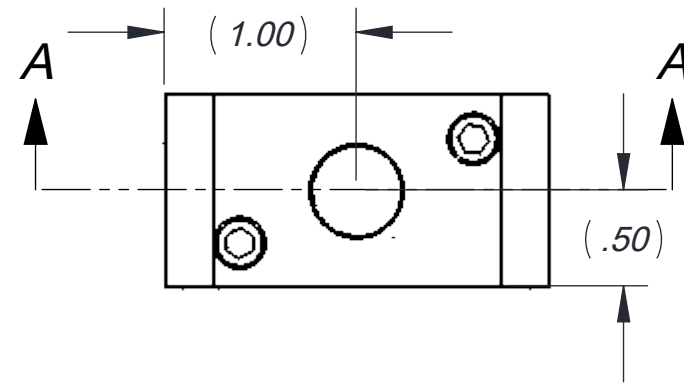
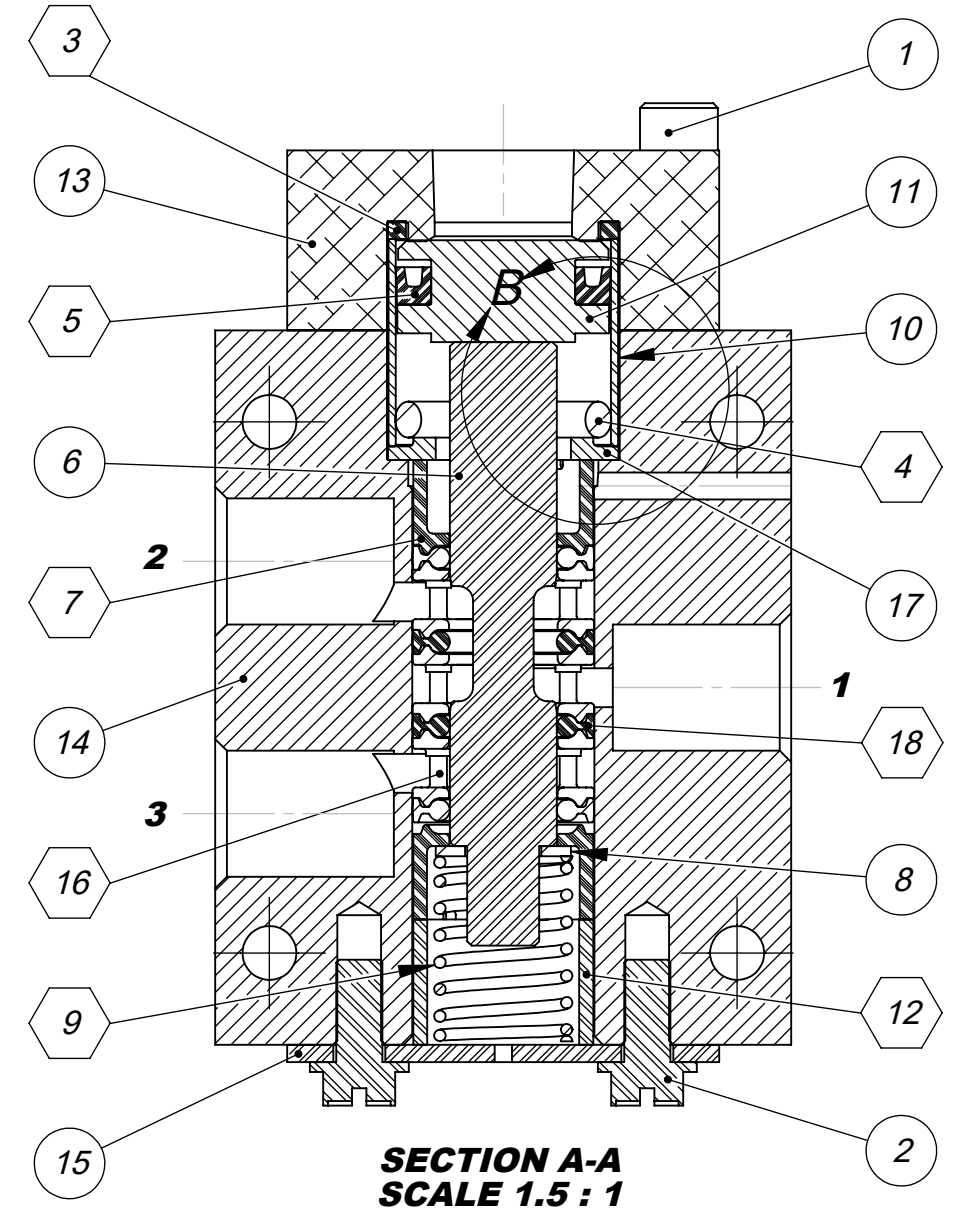


- NOTES:**
1. SPOOL TRAVEL: .300 MAX.
 2. OPERATING PRESSURE: 150 PSI MAX.
 3. PILOT PRESSURE: 150 PSI.
 4. TEMPERATURE RANGE: -20° F TO 160° F.
 5. PRIMARY OPERATOR: DIRECT PILOT.
 6. SECONDARY OPERATOR: SPRING RETURN.
 7. MUST BE MOUNTED IN THE HORIZONTAL POSITION
 8. SERVICE MEDIA: PNEUMATIC.
 9. SEAL MATERIAL: STD. = BUNA-N.
 10. SERVICE PARTS ARE MARKED IN A CIRCLE.
 11. REPAIR PARTS ARE MARKED IN A HEX.
 12. REPAIR KIT: STD. = 11-0380.



DETAIL B
SCALE 3 : 1

SEAL MATERIAL OPTIONS (SM)		
CODE	MATERIAL	PART NO.
STD	BUNA	11-0302
-26	VITON	11-0302-1



SECTION A-A
SCALE 1.5 : 1

ITEM NO.	PART NUMBER	DESCRIPTION	QTY.
1	01-0006	SCREW SHC #8-32 X .88 BLOX	2
2	01-2027-1	SCREW, HHC, 8-32 X .37	2
3	02-1000	RING, SEAL, SQ. C/S, BUNA	1
4	04-25-113	O-RING, BUNA 70, -113	1
5	06-0073	U-CUP, BUNA	1
6	11-0299	SPOOL	1
7	11-0300	SPACER, END	2
8	11-0304	WASHER, SPRING SUPPORT	1
9	11-0309	SPRING, COMP.	1
10	11-0313	TUBE, PILOT, MINI-1	1
11	11-0315	PISTON, PILOT	1
12	11-0316	SPACER TUBE	1
13	11-0320	PILOT ADPT, MINI-1	1
14	11-0326	BODY 3-W MINI-1	1
15	11-0334	END PLATE	1
16	11-0362	SPACER ASSY., SEAL	3
17	11-0384	PLATE, STOP, MINI-1	1
18	SEE TBL (SM)	SEAL, VALVE	4

THIS DOCUMENT AND ITS CONTENTS ARE THE PROPERTY OF LEXAIR, INC. THEY ARE FURNISHED TO YOU ON THE FOLLOWING CONDITIONS: NO RIGHT OR LICENSE IN RESPECT OF THIS DOCUMENT OR ITS CONTENTS IS GIVEN OR WANTED IN SUPPLYING THIS DOCUMENT TO YOU. THIS DOCUMENT OR ITS CONTENTS ARE NOT TO BE USED OR TREATED IN ANY MANNER INCONSISTENT WITH THE RIGHTS OF LEXAIR, INC. OR TO ITS DETRIMENT AND ARE NOT TO BE COPIED, REPRODUCED, OR DISCLOSED OF, EXCEPT WITH ITS PRIOR WRITTEN CONSENT.

REVISIONS

H	PREVIOUS REVS. OMITTED. REDRAWN TO CURRENT ENG. STDS. ECL: 06047 04-25-06 HWP TPO
I	ECL: 13087 12-02-13 AJP REMOVED INNER SPRING FROM DRAWING.
J	UPDATED TO CURRENT ENGINEERING STDS. ECL: 22004 08-25-21 TES

ECL: 06047 04-25-06 HWP

Tolerances Unless Otherwise Specified: TYPE FINISHED AS CAST DEC .00 ± .015" ± .030" DEC .000 ± .005" ± .010" FRACTIONAL ± 1/64" ± 1/32" ANGLES ° ± 1/2° ± 1° FINISH 175 µ in.	MATERIAL SPEC.	PC. NO.: M3821301
	PROCESS SPEC.	MADE FROM:
3-W, DPO, SPR. RETN. MINI-1 VALVE ASSY. 2025 Mercer RD, Lexington, Kentucky 40511	DRAWN HWP CHECKED TPO APRVD. TPO	MODEL FILE: M3821301.SLDASM CAD FILE: M3821301.slddrw C M3821301
	SHEET NO. 1 of 1 SCALE 1:1	SHEETS
	APPROX. WT. 0.56 LBS	