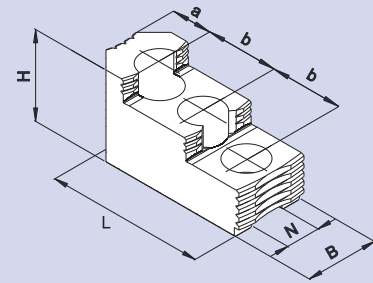
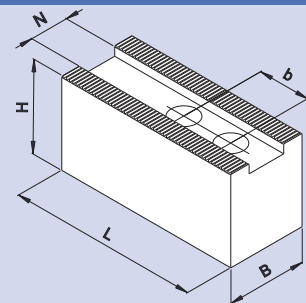


REVERSIBLE HARD TOP JAWS



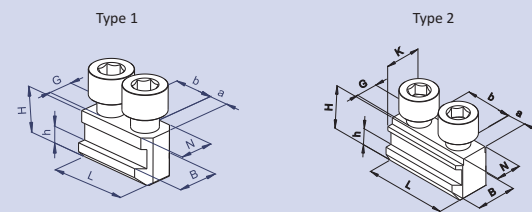
Chuck Metric Serration		135	170	215	260	315
B	mm	25.4	31.75	38.1	44.45	50.8
H	mm	38.10	49.27	61.97	61.97	69.85
L	mm	52.65	72.39	96.01	110.74	103.63
N	mm	10	12	14	16	21
a	mm	12.16	19.12	19.60	19.73	21.73
b	mm	14	20	25	30	30

SOFT TOP JAWS



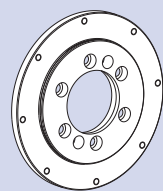
Chuck Metric Serration		135	170	215	260	315
B	mm	25.4	31.75	38.1	44.45	50.8
H	mm	25.4	38.1	50.1	50.8	63.5
L	mm	50.8	69.85	95.25	120.65	139.7
N	mm	10	12	14	16	21
b	mm	14	20	25	30	30

T NUT



Id. No.	Chuck	Type	B mm	H mm	L mm	N mm	K mm	G mm	a mm	b mm	h mm
ST56061302	P135	2	17	14.5	27	10	12	M8	6.5	14	6.5
ST56061702	P170	2	17	18.5	36	12	14	M10	8	20	6.5
ST56062102	P215	2	19	20.5	45	14	17	M12	10	25	7.5
ST56062602	P260	2	19	20	52	16	17	M12	11	30	7.5
ST56063100	P315	1	25	26.5	56	21	-	M16	13	30	10

ADAPTER



Chuck	ISO	Id. No.
135	A5	CP00005
	A6	CP00007
170	A5	CP00006
	A6	CP00007
215	A5	CP00008
	A6	CP00009
260	A6	CP00010
	A8	CP00011
315	A6	CP00020
	A8	CP00012
	A11	CP00021

Front-mounted pneumatic power chuck



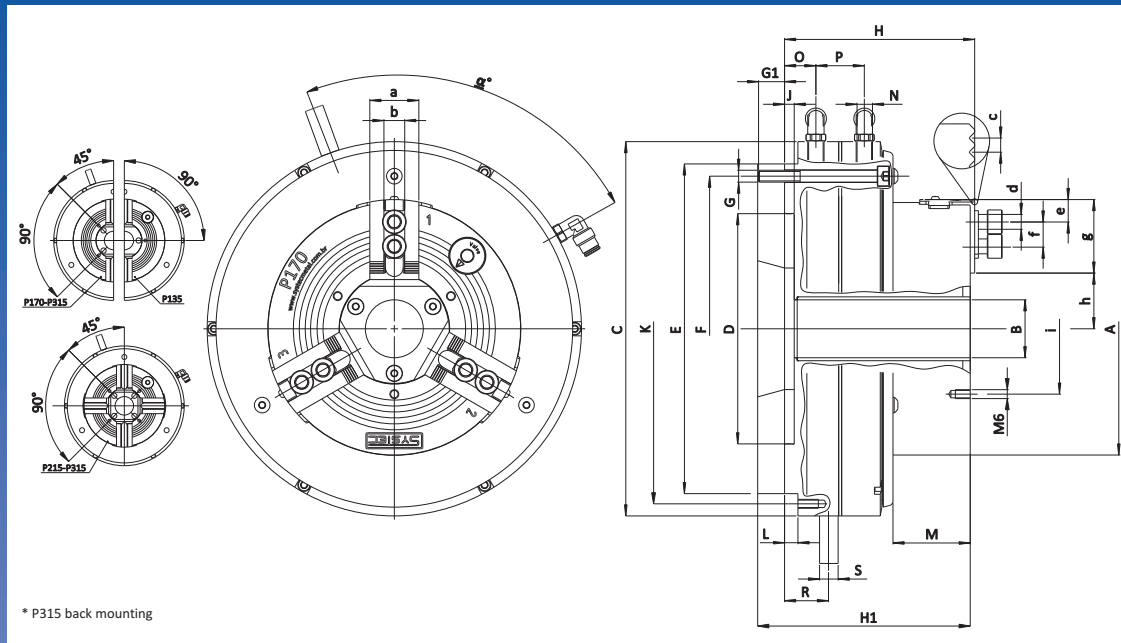
- Greater rigidity and durability
- No necessary adjustment of teflon elements
- 15% faster
- 45% more gripping force
- Cycle in one half the time
- Environmentally friendly

Increase your productivity with a Systec chuck

U.S. Importer-
Lexair, Inc.
 Phone: 859-255-5001 Fax: 859-255-6656
 2025 Mercer Road Lexington, Kentucky 40511
 www.lexairinc.com

SYSTEMEC
 www.systemecmetal.com.br

SYSTEMEC
 www.systemecmetal.com.br



* P315 back mounting

Model		P 135-32	P 170-39	P 215-52	P 260-92	P 315-115*
Through hole	A mm	136	170	215	260	315
	B mm	32	39	52	92	115
	C mm	204	252	292	335	362
	(H6) D mm	120	155	195	235	235
	E mm	174	222	262	305	332
	F mm	159.5	205.5	245.5	286.5	312.5
Screw DIN 912 - 12.9	G mm	M6x70 (6)	M8x75 (8)	M8x75 (8)	M10x90 (8)	M10x40 (8)*
	G1 mm	10.5	12.5	12.5	18.5	26
	H mm	122	128	135	153	165
	H1 mm	138	138	145	169	191
4x90°/M6 (fixed distributor ring)	J mm	6.5	6.5	6.5	6.5	6.5
	K mm	-	244	284	-	-
	L mm	9	9	9	11	11
	M mm	52	52	59	66	77
Pneumatic connection	N pol	G 1/8"	G 1/8"	G 1/8"	G 1/8"	G 1/8"
	O mm	19.7	21.2	21.2	25	25
	P mm	29.5	32.5	32.5	38.1	38.1
	R mm	28	31	31	37	37
Anti-Rotation pin	S mm	12.5	12.5	12.5	12.5	12.5
	a mm	30	33	38	38	45
	(h8) b mm	12	14	17	17	21
Serration	c pol./mm	1/16"x90°/1.5x60°	1/16"x90°/1.5x60°	1/16"x90°/1.5x60°	1/16"x90°/1.5x60°	1/16"x90°/1.5x60°
Screw DIN 912 12.9	d mm	M8x20	M10x20	M12x25	M12x25	M16x30
min.	e mm	7	7,5	10	10	13
	f mm	14	20	25	30	30
Serration length	g mm	39	49.5	66	66	77.5
min./máx.	h mm	27.5/30.5	33.5/37.5	44/40	61/66	76.5/81.5
	i mm	70	88	115	160	190
	alpha grau	80	80	80	80	80

Subject to technical changes

Call Systec for more information

SYSTEC
www.systecmetal.com.br

Chuck with through-hole, available in 2, 3 and 4 jaws

All chuck sizes are available in inch or metric serrations

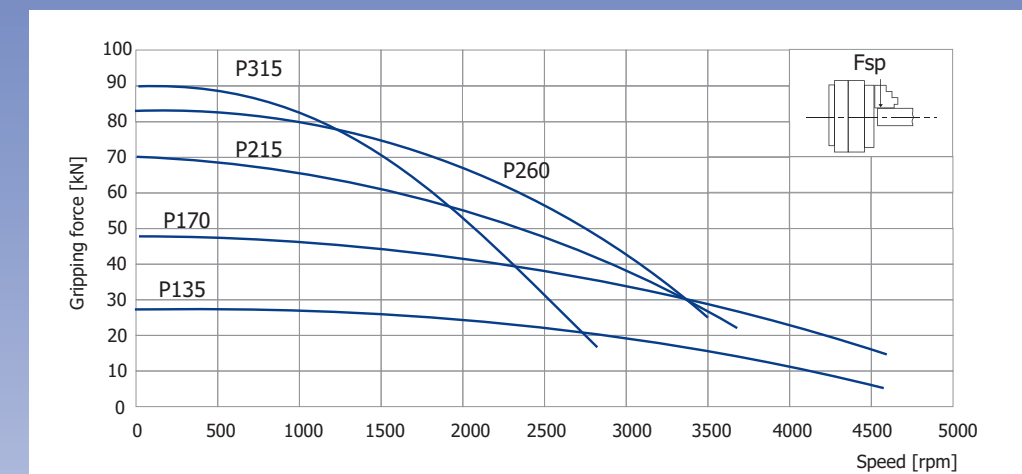
Chuck bodies are fully hardened to 62 Hrc and precision ground

Internal safety valves prevent loss of air pressure and gripping force

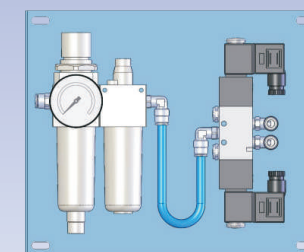
Standard equipment: Chuck, mounting bolts, quick pneumatic disconnect G 1/8", soft top jaws, grease, 2 hoses and 1 set of T nuts

Optional accessories: Hard top jaws, spindle adapters and controls

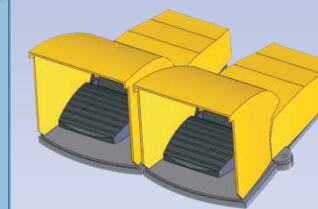
Model		P 135-32	P 170-39	P 215-52	P 260-92	P 315-115
Id. No. Inch Serration (1/16"/90°)	2 jaws	ST27560213	ST27560217	ST27560221	ST27560226	ST27560231
	3 jaws	ST27560313	ST27560317	ST27560321	ST27560326	ST27560331
	4 jaws	--	--	ST27560421	ST27560426	ST27560431
Id. No. Metric Serration (1.5/60°)	2 jaws	ST27560513	ST27560517	ST27560521	ST27560526	ST27560531
	3 jaws	ST27560613	ST27560617	ST27560621	ST27560626	ST27560631
	4 jaws	--	--	ST27560721	ST27560726	ST27560731
Stroke per jaw	mm	3	4	4	5	5
Operating pressure min./máx.	bar	3.5/10	3.5/10	3.5/10	3.5/10	3.5/10
Piston area	cm²	164	278	400	509	581
Gripping force at 6 bar	kN	26	47	70	83	91
Max. Speed at 6 bar	rpm	4500	4500	3600	3500	2500
Air consumption	litros	1.9	4.6	6.7	10.5	12
Weight (without jaws)	kg	14	23	35	51	70
Moment of inertia	kg.m²	0.048	0.129	0.283	0.592	1.073



The gripping force diagrams refer to a chuck properly lubricated with ST01 grease and actuated at 6 bar. Excessive speed, over-sized jaws, or poor lubrication will compromise the grip force and attainable speeds of all chucks



Dual foot - Model M2FV



Pair of mechanical foot valves for open/close/exhaust of the chuck.
Air filter, pressure regulator and air lubricator are included.
Dual foot pedal - Model M2FV.
Other controls are available upon request.

Systec recommends the inclusion of safety switches, to your installation, in order to prevent the chuck from opening during rotation of the spindle. Please call us for additional information.